



Loop-IP 6610 E1/Router Box

Description

The Loop-IP 6610 E1/ Router small metal box provides connectivity from 10/100 BaseT LAN to E1 WAN.



Features

- E1 WAN port
- Local control and diagnostic via RS232 port.
- Router - 10/100 BaseT auto selection.
- Multicolor LED indicators.

**CERTIFIED
ISO-9001**

Ordering Information

To specify options, choose from list below:

Model	Description
Loop-IP 6610-E1	Router/ E1 Box

Loop-IP 6610 E1/Router Box Product Specification

Line Interface

Line Rate 2.048 Mbps \pm 50 ppm
Data Rate n x 64Kbps (n=1 to 31)
Line Code AMI/ HDB3
Input Signal ITU G.703
Jitter ITU G.823

Connector BNC (75 ohm), RJ48C (120 ohm)
Output signal ITU G.703
Electric 75 ohm/ 120 ohm twisted pair

LAN Interface

- Support SNMP management
- Physical interface 10/100 Mbps
- RJ45 connector
- TFTP download
- Configuration upload/ download
- SNMP/Telnet management via data channel

WAN Interface

- Layer 2 protocol: HDLC, PPP
- Single WAN port
- Remote bridge support (padding/ un-padding Ethernet CRC checksum)
- Support RIP-I, RIP-II, Static Route
- Support NAT function

Physical Interface

- WAN: E1/FE1 (Integrated CSU/DSU)
- LAN: 10/100 Base-T Ethernet port
 - Auto negotiation support
 - Auto MDI-X

Power Interface

- AC : Full range support 110/240, 85 Vac – 265 Vac
- DC: 24V or 48V support manufacture option (36 Vdc - 75 Vdc)
- Power consumption: Max. 6 watt

Routing Protocol

- Static Route
- RIP v1 & v2

WAN Protocol

- PPP
- HDLC

NAT

- NATP

Remote Bridge

- PPP/BCP
- User configurable aging time
- Up to 16K MAC Table
- Cisco ISL packet transparent
- VLAN transparent
- Bridge with IP

Administration & Diagnostics

- Access control
- Ping
- Loopback
- Telnet

Diagnostics Test

Loopbacks	Line Loopback, Payload Loopback, Local Loopback, and Router to Line Loopback
Test Pattern	15-bit PRBS, 3-in-24, 1-in-8, 2-in-8, ALT 1
Idle Channel	Use of idle channel to perform PRBS diagnostic test

Management

- SNMP v1/v2
- MIB: MIBII, Ethernet MIB, Transmission MIB
- Telnet
- Serial console with CLI
- TFTP firmware download

Console Port

Connector	DB9S
Electric	RS2323
Protocol	CLI

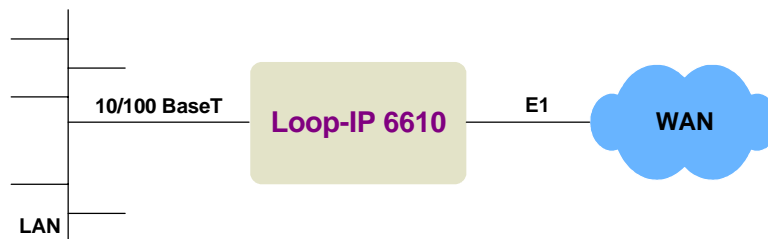
Performance Monitor

Performance Store	Last 24 hours performance in 15-minute intervals and last 7 days in 24-hour summary line, user, and remote site
Performance Reports	Date & Time, Errored Second, Unavailable Second, Bursty Errored Second, Severe Errored Second, Controlled Slip Second, and Loss of Frame Count
Alarm History	Date & Time, Alarm Type, and Location
Alarm Queue	Maximum 40 alarm records which record the latest alarm type, location, and date & time

Physical

Dimensions	210 x 140 x 41.5 cm (WxHxD)
Temperature	0 -50°C
Humidity	0-95% RH (NON-CONDENSING)
Mounting	Desk-top stackable, wall mount

Application Illustration



LOOP TELECOMMUNICATION INTERNATIONAL, INC.

Worldwide

8F, No. 8, Hsin Ann Road,
Science-Based Industrial Park
Hsinchu, Taiwan 300
Tel:+886-3-578-7696
Fax:+886-3-564-6272
www.LoopTelecom.com
sales@loop.com.tw

Taipei, Taiwan

2F, No. 40, Section 2,
Tuan-Hwa S. Road,
Taipei, Taiwan 106
Tel:+886-2-2784-4000
Fax:+886-2-2754-2325

North America

8 Carrick Road
Palm Beach Gardens
Florida 33418, U.S.A.
Tel:+1-561-627-7947
Fax:+1-561-627-6615
jimber561@aol.com

Suzhou China

Tel:+86-512-6252-0456
Fax:+86-512-6252-7641
www.looptech.com.cn
Info@looptech.com.cn
Sales@looptech.com.cn

Tianjin China

Tel:+86-22-8789-2753
Fax:+86-22-8789-0344
Loop@loop-tj.com