

# N50 Series

## N50 Series 2BASE-TL EFM Ethernet Extender

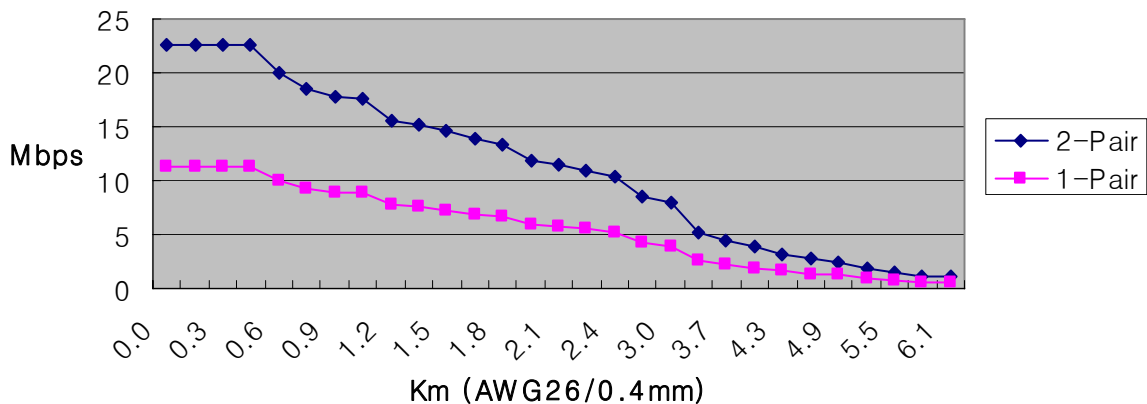


NexComm Systems' N50 series, cost-effective simple bridge Ethernet Network Extender, provides a remarkably flexible and easy-to-use solution enabling Service Providers and Enterprises to extend the Ethernet connectivity over existing copper infrastructure. Designed with standard-based EFM technology (2BASE-TL) support symmetrical bandwidth at rates up to 22Mbps.

### Wide Range of Transmission Rates

Ranging from 128Kbps to 22Mbps, N50 supports various levels of transmission rates depending on the distances as the below chart for Distance vs. Bandwidth.

Distance vs. Bandwidth



### Application

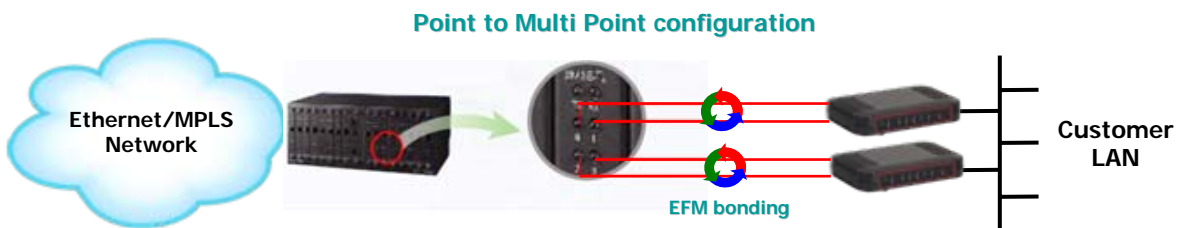
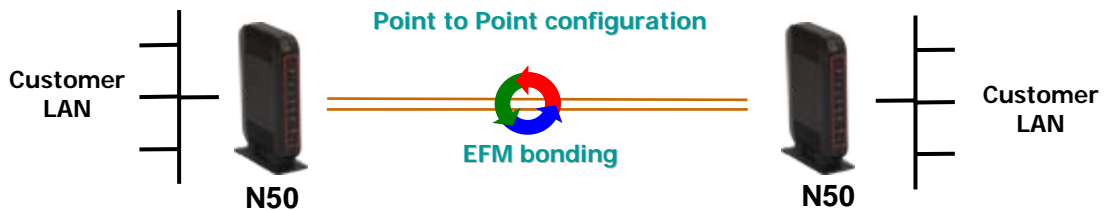
- Long Reach Symmetric Transparent LAN extension service
- Campus network connectivity extension
  - Railway Network
  - Factory Site
- Cost effective Metro Ethernet Service Extension over copper.

### Highlights

- Cost-effective Ethernet extension solution
- Easy and quick installation (Plug-and-Play)
- Various Diagnostic Indicators
- Reinforced surge protection from various sources of electronic shocks .

## Flexible configuration either in Point-to-Point and Point to Multipoint

With such flexibility, users can operate it in Point-to-Point configuration by simply configuring dip switches to set N50 as a CO or CPE device. It also operates in Point-to-Multi Point configuration as a CPE of N5000 series, Ethernet-based SHDSL Access Concentrator.



## Specification

### Mechanical & Power Requirement

- Dimension (mm) : 160(W) X 108(D) X 30(H)
- Weight : 0.8 Kg
- Power: DC 5V 3.0A

### Network Interface

- LAN
  - 1 X 10/100BASE-T Port (RJ45)
  - Auto MDI/MDIX
- WAN
  - ITU-T G.991.2. (G.shdsl.bis 2004)
  - 2BASE-TL, 64/65o encoding
  - EFM bonding (IEEE 802.3ah PAF)
  - RJ45 Connector
  - Max 11Mbps per pair (TC-PAM32/64)

### Management Interface

- Dip Switch for CO/RT configuration
- Web Browser (HTTP)

### LAN Protocols

- 802.1d Transparent Bridging
- up to 2K MAC Addresses

### Production & Regulatory

- ISO 9001 Quality Management
- ISO 14001 Environmental Management
- TL 9000 Quality Management
- CE Approval
- VCCI Approval
- RoHS compliant

### Environment

- Operating Temperature : 0° ~ +50°C
- Storage Temperature : -40° ~ +85°C
- Relative Humidity : 95%, non-condensing

### Ordering Information

- N52: 2-pair 2BASE-TL EFM Ethernet Extender
- N51: 1-pair 2BASE-TL EFM Ethernet Extender

C-501, Bundang Techno-Park, 145 Yatap-Dong, Bundang-Ku, Sungnam-City, Kyunggi-Do, 463-760, Korea  
Phone: +82.31.781.1862/ Fax: +82.31.781.1863  
E-mail: [sales@nexcomm.co.kr](mailto:sales@nexcomm.co.kr)  
URL: [www.nexcomm.co.kr](http://www.nexcomm.co.kr)

\* Specification is subject to change without prior notice.

**NEXCOMM**  
S Y S T E M S