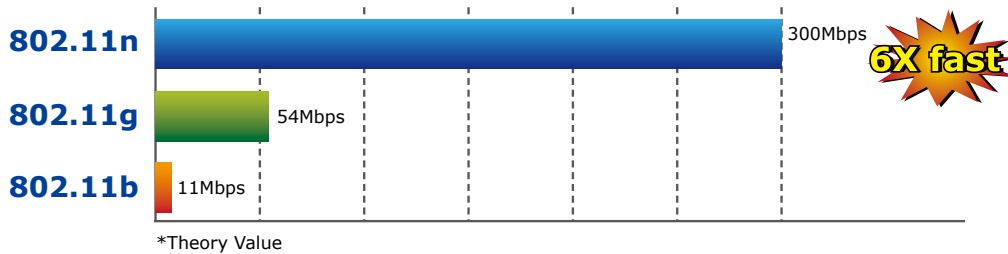


# 300Mbps 802.11n Wireless Broadband Router



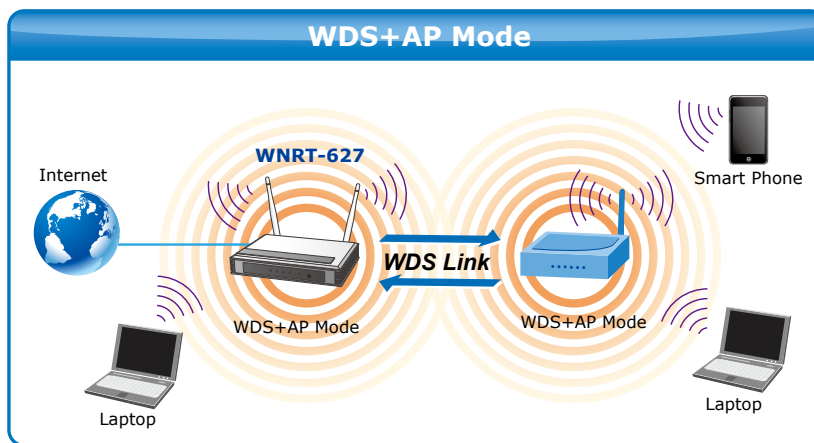
### Ultra High Speed 802.11n Wireless

The WNRT-627 features latest IEEE 802.11n radio with 2T2R MIMO antenna technology to provide improved wireless speed and coverage with up to 300Mbps upload and download data rate. The incredible wireless speed makes it ideal for handling multiple HD movies stream, high resolution on-line game, stereo music, VoIP and data streams at the same time stably and smoothly. It is also backward compliant with 802.11g and 802.11b standards; thus it is no need to change the existing network for maintaining connectivity. Just connect to the WNRT-627, you can immediately enjoy the high-speed wireless sharing.



### Wireless Coverage Plus !

With two **5dBi high-gain antennas** attached, the WNRT-627 provides stronger signal quality and more excellent performance than normal wireless routers especially when in the long range or poor environment condition for further wireless coverage range. Besides essential wireless sharing for Wi-Fi clients, the WNRT-627 provides **WDS (Wireless Distribution System)** bridge mode to facilitate wireless network deployments and range expanding. It provides more flexibility for users while establishing wireless network.



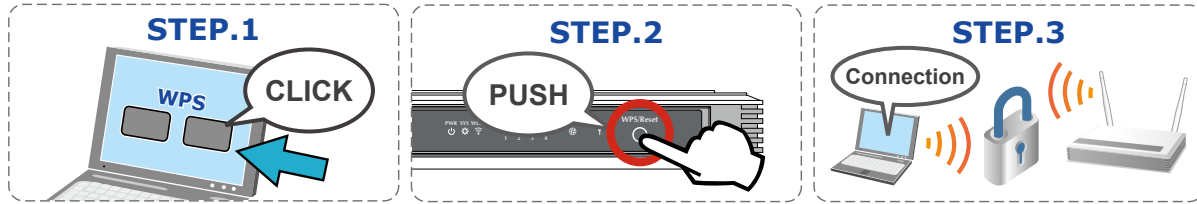
### Wide Range of Wireless Security Support

To secure the wireless communication, the WNRT-627 supports not only 64/128/152-Bits WEP, but also up-to-date encryptions including WPA/WPA2-PSK with TKIP/AES, wireless MAC filtering and SSID broadcast control to consolidate the wireless network security and prevent unauthorized wireless connection.

### Easy Secure Wireless Connection

In order to simplify security settings for home and SOHO network, the WNRT-627 supports **Wi-Fi Protected Setup (WPS)** with configuration in PBC and PIN type. By just push the WPS button or key in the PIN code, the secure connection between the WNRT-627 and wireless clients will be built immediately, which offers a convenient and fast method for users.

### WPS (Wi-Fi Protected Setup) Quick & Easy Wireless connection



#### Advanced Firewall Security

To protect user's network from external attacks, the WNRT-627 provides dual firewall mechanisms – **NAT** and **SPI**. The NAT function allows multiple users to access to Internet via a single legal IP, and the SPI (Stateful Packet Inspection) firewall protects intranet PCs from unauthorized access and prevents possible DoS attacks from the Internet. In the aspect of firewall, the WNRT-627 supplies flexible **IP-Based Access Control**, **schedulable MAC access control** and URL block to prevent possible hackers attack.

#### Full Functioned Router

As a robust broadband router, the WNRT-627 supports various Internet connection protocols and auto detect function to establish Internet service when the ISPs use different connection type. It also provides Virtual Server and DMZ functions for LAN PC to act as an application server and offer certain service to the clients in the LAN. The WNRT-627 allows users to setup trigger ports of special applications and utilize Internet services smoothly. Moreover, **IP-Based bandwidth control** optimizes time-critical applications such as VoIP or video conference not to be interrupted or lagged due to P2P files download by other clients in the same network environment.

#### Easy to Setup

Users can easily configure the wireless router by running the Smart Setup! wizard included in the CD-ROM provided in the package. Just click the wizard and setup step by step, you can easily get in the wireless network and enjoy high speed Internet transmission in home or office.

## KEY FEATURES

#### IEEE COMPLIANT WIRELESS & WIRED LAN

- Compliant with IEEE 802.11n wireless technology capable of up to 300Mbps data rate
- Backward compatible with 802.11b/g standard
- Two 5dBi Fixed Antenna
- Equipped with four LAN ports (10/100Mbps) and one WAN port (10/100Mbps), Auto MDI/MDI-X supported

#### FIXED-NETWORK BROADBAND ROUTER

- Internet types: Dynamic IP/ Static IP / PPPoE / Telstra Big Pond / L2TP / PPTP
- Supports Static Routing, WDS, UPnP, Dynamic DNS

#### SECURE NETWORK CONNECTION

- Supports Wi-Fi Protected Setup (WPS)
- Advanced security: 64/128/152-bit WEP, WPA/WPA2, WPA-PSK/WPA2-PSK with TKIP/AES Encryption, and 802.1x Authentication.

- Supports NAT firewall features, with SPI function to protect against DoS attacks
- IP / Protocol-Based access control and MAC Filtering

#### ADVANCED NETWORKING FUNCTION FOR SPECIFIC APPLICATION

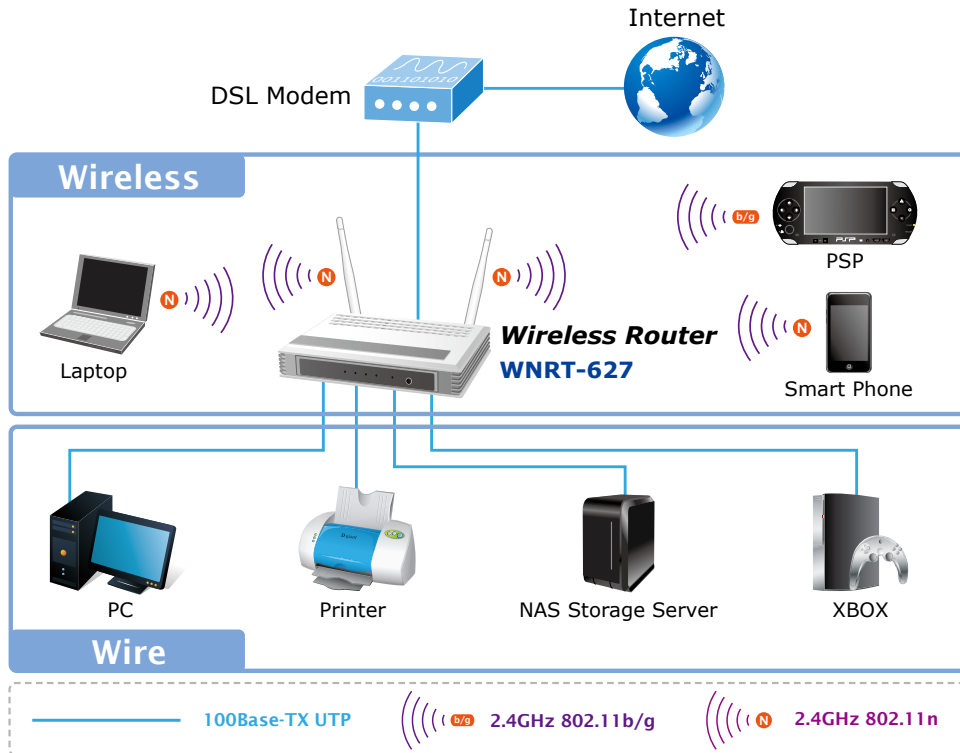
- Supports multiple sessions IPSec, L2TP and PPTP VPN pass-through
- Supports Virtual Server, ALG, DMZ and UPnP for various networking applications
- Supports DHCP Server

#### EASY INSTALLATION & MANAGEMENT

- Web-Based UI for quick setup and easy configuration
- Remote Management allows configuration from a remote site
- System status monitoring includes DHCP Client and System Log

**APPLICATIONS**
*Multiple applications, Faster speed than 802.11g WLAN*

With IEEE 802.11n technology compliant with 802.11b/g standard, the WNRT-627 provides a better wireless signal, higher data rate and performance than 802.11g compliant routers. Furthermore, the WNRT-627 features the latest security and firewall functions to prevent unauthorized access or invasion. Just click the Wizard and setup step by step and then you can relax to get in the wireless network and enjoy high speed Internet transmission in your home or office.


**SPECIFICATION**

Product	<b>300Mbps 802.11n Wireless Broadband Router</b>	
Model	<b>WNRT-627</b>	
<b>Hardware Specification</b>		
Interface	WAN Port:	1 x 10/100Mbps Auto MDI/MDI-X RJ45 port
	LAN Port:	4 x 10/100Mbps Auto MDI/MDI-X RJ45 port
Antenna	Gain	2 x Fixed 5dBi antenna
	Orientation	Omni-directional
Power Button	Power On/Off button at rear panel	
WPS / Reset Button	WPS / Reset button at front panel Push the button at least 5 seconds to reset to factory default setting	
LED Indicators	PWR, SYS, WLAN, LAN x 4, WAN, WPS with green light	
Material	Plastic	
Dimension (W x D x H)	174 x 110 x 23 mm	
Weight	280g	
Power Requirement	9V DC, 0.6A	
<b>Wireless interface Specification</b>		
Standard	Compliance with IEEE 802.11b/g/n	
Frequency Band	2.4~2.4835GHz	
Extend Frequency	DSSS	
Modulation Type	DBPSK, DQPSK, QPSK, CCK and OFDM (BPSK/QPSK/16-QAM/ 64-QAM)	
Data Transmission Rates	11n(40MHz):270/243/216/162/108/81/54/27Mbps 135/121.5/108/81/54/40.5/27/13.5Mbps (Dynamic)	
	11n(20MHz):130/117/104/78/52/39/26/13Mbps 65/58.5/52/39/26/19.5/13/6.5Mbps (Dynamic)	
	802.11g:54/48/36/24/18/12/9/6Mbps (Dynamic)	
	802.11b:11/5.5/2/1Mbps (Dynamic)	

Transmission Distance	Indoor up to 100m Outdoor up to 300m (It is limited to the environment)
Channel	America/ FCC: 2.414~2.462GHz (11 Channels) Europe/ ETSI: 2.412~2.472GHz (13 Channels) Japan/ TELEC: 2.412~2.484GHz (14 Channels)
RF Power	High: 18 dBm (max) Middle: 15 dBm Low: 12 dBm
Receive Sensitivity	270M: -68dBm@10% PER 130M: -68dBm@10% PER 108M: -68dBm@10% PER 54M: -68dBm@10% PER 11M: -85dBm@8% PER 6M: -88dBm@10% PER 1M: -90dBm@8% PER
<b>Wireless Management Features</b>	
Wireless Operation Mode	AP, WDS (AP+Bridge), WISP Client Router
Encryption Security	WEP (64/128/152-bit) encryption security WPA-PSK / WPA2-PSK (TKIP/AES) WPA / WPA2 (TKIP/AES) WPA / WPA2 enterprise mode (802.1x authentication)
Wireless Security	Provides wireless LAN ACL (Access Control List) filtering Wireless MAC address filtering Supports WPS (Wi-Fi Protected Setup ) Enable / Disable SSID Broadcast
Wireless Advanced Features	Supports 802.11e WMM (Wi-Fi Multimedia) Supports Wireless Roaming Provides Wireless Statistics
<b>Router Features</b>	
Internet Connection Type	Shares data and Internet access for users by supporting the following protocols: <ul style="list-style-type: none"> <li>■ PPPoE</li> <li>■ Dynamic IP</li> <li>■ Static IP</li> <li>■ Telstra Big Pond</li> <li>■ PPTP / Russia PPTP</li> <li>■ L2TP / Russia L2TP</li> </ul>
Firewall	NAT firewall with SPI (Stateful Packet Inspection) NAT with ALG (Application Layer Gateway) Built-in NAT server supporting Virtual Server, and DMZ Built-in firewall with IP address filtering, Domain Name filtering, and MAC address filtering Supports ICMP-FLOOD, UDP-FLOOD, TCP-SYN-FLOOD filter, DoS protection
Routing Protocol	Static Routing
VPN Pass-through	PPTP, L2TP, IPSec
LAN	Built-in DHCP server supporting static IP address distributing Supports UPnP, Dynamic DNS Supports Flow Statistics IP & MAC Binding IP / Protocol-Based Bandwidth Control Session Number: Max. 5210
System Management	Web-Based (HTTP) management interface Remote management SNTP time synchronize Easy firmware upgrade System Log supports auto mail and save to local host
OS Compatibility	Windows 7 (32-bit/64-bit) Windows Vista (32-bit/64-bit) Windows XP Mac OSX 10.4 and higher

**Standards Conformance**

<b>IEEE Standards</b>	IEEE 802.11n (2T2R, up to 300Mbps)
	IEEE 802.11g
	IEEE 802.11b
	IEEE 802.11i
	IEEE 802.3 10Base-T
	IEEE 802.3u 100Base-TX
	IEEE 802.3x Flow Control

<b>Others Protocols and Standards</b>	CSMA/CA, CSMA/CD, TCP/IP, DHCP, ICMP, NAT, PPPoE, SNTP
---------------------------------------	--

**Environment**

<b>Temperature</b>	Operating: 0 ~ 40 degree C
	Storage: -40 ~ 70 degree C

<b>Humidity</b>	Operating: 10 ~ 90% (Non-Condensing)
	Storage: 5 ~ 90% (Non-Condensing)

**ORDERING INFORMATION**

<b>WNRT-627</b>	300Mbps 802.11n Wireless Broadband Router
-----------------	---

**AVAILABLE MODULES**

<b>WNL-U554</b>	802.11n Wireless USB 2.0 Adapter
<b>WNL-U554A</b>	802.11n Wireless USB 2.0 Adapter External 2dBi Antenna
<b>WNL-U554M</b>	802.11n Micro Wireless USB 2.0 Adapter
<b>WNL-9501</b>	802.11n Wireless PCI Express Adapter

\* For best performance and wireless connection, sincerely advice to match the above related products.