

# Unified Office Gateway



The PLANET UMG-2000 is a total IT solution for the small and medium business (SMB). It integrates commonly used office appliance features and provides Internet access, telephone, fax, data, and print services in one device. Built into the UMG-2000 is a managed L2 Ethernet switch with 24 Fast Ethernet ports and 2 Gigabit Ethernet ports, a wireless access point, and 4-Port FXO that allows you to connect to various Internet and telephone carriers.

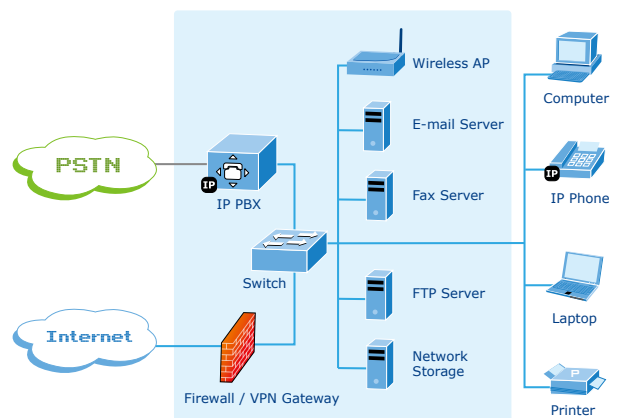
Branch-to-Branch secured network and call features bring your remote offices together. The UMG-2000 facilitates sharing files safely between multiple office locations through secure channels. For VoIP functions, the users can call any extension from any remote location without paying local or long distance charge. Smart Wizard automatically adjusts your configuration and guides you through initial setup. The administrator can easily manage user accounts with privilege and access control. In the storage feature, the storage volumes can be created for individual users and groups within the corporate. The UMG-2000 is also as the Web and E-mail servers that are able to be set up with one mouse click. It provides schedule automated snapshot and backup tasks to prevent data loss. Besides the above functions, the extensive features include DMZ support, VoIP call control and Call Detail Record (CDR), configuration backup and restore, secure remote management capabilities and many more.

## APPLICATIONS

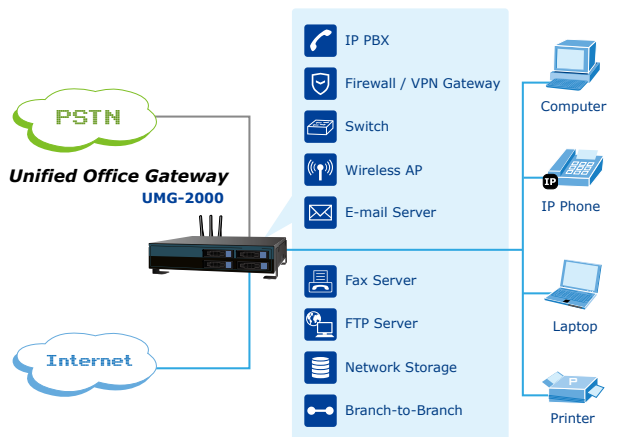
### Highly Integrated IT Services

Providing IP PBX / VoIP, Internet Security, E-mail / FAX Server, Switch, Wireless AP, and Network Storage service, the UMG-2000 features single point of management to improve IT service ability.

The UMG-2000 benefits the SMBs lower cost of ownership, quick and easy deployment, low noise, space saving and energy conservation for better business environment.



### Traditional Office System



### New Office System



## KEY FEATURES

### *IP PBX / VOIP SERVICE*

- SIP 2.0 (RFC3261)
- PSTN Support
- Call-Parking, Echo Cancellation
- FXO Disconnection Tone Detection
- QoS Support
- Music on Hold
- Telephone Conference, 3-Way Calling
- Voicemail to E-mail
- Forwards to Voicemail on No-Answer
- Supports Call Hold, Call Waiting
- Blacklist of Number Patterns
- Call Privilege Control, Call Log
- 450 Minutes Recording Time
- Unconditional, Unavailable, Busy Call Forward
- Fax Server Support

### *E-MAIL SERVICE*

- Supports POP3, SMTP, IMAP
- Secured Socket Layer (SSL)
- Junk Mail Filtering
- E-mail Storage Quota
- E-mail Alias Group Assignment
- Mail Attachment Size Restriction
- User E-mail Storage Quota
- E-mail Log Record Management
- Anti-Virus and Anti-Spam
- Auto Backup, Auto Reply
- E-mail Blacklist Based on Domain
- Name, User Name, and E-mail Address
- Supports Web Mail

### *INTERNET SECURITY SERVICE*

- Static IP, ADSL (PPPoE), PPTP, DHCP
- Web Content Filter by Domain and Keyword
- Access Control List (ACL)
- URL / IM / P2P Blocking
- Firewall / NAT
- IPSec / PPTP / L2TP Pass-through
- DoS Attack Protection (TCP SYN Flood, UDP Flood, ICMP Flood, Ping of Death)
- UPnP and DMZ
- Site-to-Site SSL VPN
- PPTP VPN Remote Access
- RIP / Static Route

### *NETWORK STORAGE SERVICE*

- RAID 0, 5, 10, and JBOD
- Up to 4TB Hot-swap Disk Array
- Supports User Network Storage Quota
- Compatible Windows 2000 / XP / Vista, Mac, Linux
- Scheduled Auto Backup, Auto Snapshot
- Support User / Group Privilege ACL

### *SYSTEM MANAGEMENT*

- Single Point of Management
- System Logging with E-mail Alert
- Fast Recovery with Remote Service
- Environment Monitoring

### *WIFI SERVICE*

- 1 x 802.11b/g/n Wireless Access Point
- 3 x RP-SMA Detachable Antenna
- Security: WEP / WPA / WPA2
- SSID

### *24+2G SWITCH SERVICE*

- IEEE 802.1d Spanning Tree
- IGMP Snooping

**SPECIFICATION**

<b>Product</b>	<b>Unified Office Gateway</b>	
<b>Model</b>	<b>UMG-2000</b>	
<b>Hardware Specification</b>		
<b>Case</b>	2U high Rack or Desk	
<b>WAN</b>	1 x RJ-45 (10/100Base-TX, Auto-Negotiation, Auto MDI/MDI-X)	
<b>LAN</b>	2 x RJ-45 (10/100/1000Base-T, Auto-Negotiation, Auto MDI/MDI-X)	
	24 x RJ-45 (10/100Base-TX, Auto-Negotiation, Auto MDI/MDI-X)	
<b>SATA support</b>	4-Port SATA Controller (SATA I, SATA II Hard Disk)	
<b>Hard Disk</b>	Hot-Swappable SATA Disk (4 x 80GB/160GB/250GB/500GB/1TB)	
<b>Voice</b>	4 x RJ-11 (4 x FXO)	
<b>Wireless</b>	1 x 802.11b/g/n Wireless Access Point, 3 x RP-SMA Detachable Antenna	
<b>USB</b>	2 x USB2.0 (future feature)	
<b>Hardware</b>		
<b>LED Indicators</b>	1 x PWR LED	
	1 x Internet LED	
	1 x PBX LED	
	1 x WLAN LED	
	1 x E-mail LED	
	1 x Firewall LED	
	1 x Alert LED	
	4 x Storage LEDs	
	1 x BTB LED	
	1 x FTX LED	
	26 x LAN LEDs	
	<b>Software Specification</b>	
	<b>VoIP</b>	SIP protocol
- SIP 2.0 (RFC3261,RFC2833)		
Registration		
- Factory Default: 50 nodes, Max. 250 nodes		
Calls		
- Max. 50 concurrent calls		
Voice Compression Code Technology		
- G.711, G.726, G.723.1 (5.3, 6.3kbps), G.729A (8kbps), GSM		
Echo Cancellation		
- G.165/G.168		
Gain Control		
- In/Out +/-6db		
Voice Processing		
- Voice Activated Detection		
- DTMF Detection/Generation		
- G.165/G.168 Echo Cancellation (ECN)		
- Comfort Noise Generation (CNG)		
- Gain Control		
<b>IP PBX</b>	- Support call hold, call waiting, 3-way call conference with feature phones	
	- Built-in in-line call transfer	
	- Unconditional, unavailable, busy call forward, custom time of no answer	
	- Per-calling-number forward and rejection	
	- Group-based call pick-up	
	- Call-parking	
	- Inter-PBX SIP trunking	
	- Multi-room meet-me conference	
	- Auto-attendant	
	- Voice mail system	
	- Call privilege grouping	
	- FXO interface for PSTN Inbound/outbound	
	- FXO disconnection tone detection	
	- Caller ID detection	
	- In-band/RFC2833/SIP-INFO DTMF translation	
	- Music on hold (MoH), user upload MoH	
	- Direct line Outbound	

<b>Voicemail</b>	<ul style="list-style-type: none"> <li>- User PIN</li> <li>- 450 minutes for personal record</li> <li>- E-mail notification</li> <li>- Personal reception on unavailability</li> <li>- Reply call or new call in voicemail menu</li> </ul>
<b>E-mail</b>	<ul style="list-style-type: none"> <li>Protocol</li> <li>- POP3,IMAP,SMTP</li> <li>Support accounts</li> <li>- 250 users</li> <li>Email Security</li> <li>- Secured Socket Layer (SSL)</li> <li>Anti-Virus</li> <li>- ClamAV</li> <li>Anti-Spam</li> <li>Junk mail block</li> <li>Mailbox size Limit</li> <li>- 200M/500M/1G/2G/No Limit</li> <li>Attachment</li> <li>- 2M/5M/10M/20M/50M/No Limit</li> <li>Block List</li> <li>- Share/User/Domain security modes</li> <li>Email Backup</li> <li>- Auto-Backup</li> </ul>
<b>Network Storage</b>	<ul style="list-style-type: none"> <li>RAID</li> <li>- RAID 0, RAID 5, RAID 10, JBOD</li> <li>Data Sharing</li> <li>- Windows Network Sharing, NFSv3</li> </ul>
<b>Security</b>	<ul style="list-style-type: none"> <li>Network Security</li> <li>- DoS attack Prevention</li> <li>VPN Max. connection</li> <li>- 100 PPTP VPN tunnels</li> <li>- 8 Site-to-Site SSL VPN tunnels</li> <li>VPN pass-through</li> <li>- IPSec, PPTP, L2TP pass-through</li> <li>Internet Security</li> <li>- Domain/Keyword Content Filter, Access Control</li> </ul>
<b>Other Protocol / Function</b>	<ul style="list-style-type: none"> <li>Protocol</li> <li>- TCP/IP, NAT, DHCP, HTTP, DNS, NTP, HTTPS, CIFS/SMB, NFSv3</li> <li>LAN</li> <li>- IEEE 802.1d Spanning Tree</li> <li>Internet Access</li> <li>- Static IP, PPPoE, DHCP, PPTP</li> <li>DMZ</li> <li>UPnP</li> <li>QoS</li> </ul>
<b>Management</b>	<ul style="list-style-type: none"> <li>- Web based GUI management</li> <li>- Firmware upgradeable via local</li> </ul>

## ORDERING INFORMATION

**UMG-2000**

Unified Office Gateway