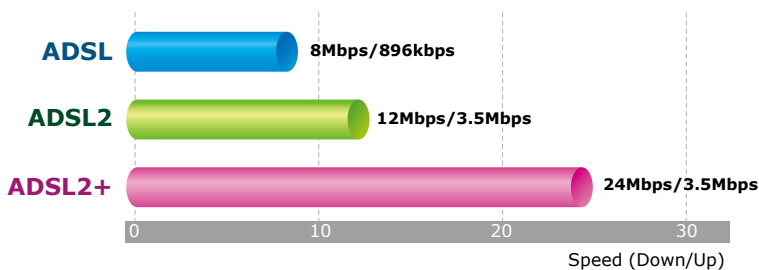


ADSL 2/2+ Router



PLANET ADE-3400 ADSL 2/2+ Router provides office and residential users with an ideal solution to sharing the high-speed ADSL 2/2+ broadband Internet connection on one Ethernet port. It uses new design to shrink its case that weighs only 70g. It can provide downstream transmission rates up to 24Mbps and upstream transmission rates up to 3.5Mbps. The product supports PPPoA (RFC 2364 - PPP over ATM Adaptation Layer 5), PPP over Ethernet (RFC 2516), and RFC 1483 encapsulation over ATM (MER, bridged or routed) to establish a connection with ISP.

ADSL Series Comparison



Via the user-friendly management interface, the ADE-3400 can be managed by workstations using standard web browsers. Furthermore, the ADE-3400 provides DHCP server, NAT, Virtual Server, DMZ, Access Control, IP Filter, MAC Filter, URL Filter, VPN Passthrough, and UPnP capabilities.

The ADE-3400 also serves as an Internet firewall, protecting your network from being accessed by outside unauthorized users. It provides the natural firewall function (Network Address Translation, NAT) and all incoming and outgoing IPs are monitored and filtered by this product as well. In addition, it can be configured to block internal users who are accessing to the Internet.

Internet Access Features

- **Shared Internet Access**
All users on the LAN can access the Internet through the ADE-3400 using only one single external IP Address. The local (invalid) IP Address is hidden from external sources. This process is called NAT (Network Address Translation).
- **Built-in ADSL 2/2+ Modem**
The ADE-3400 provides ADSL 2/2+ modem and supports all common ADSL connections.
- **PPPoE, PPPoA, Direct Connection Support**
Various WAN connections are supported by the ADE-3400.
- **Auto-detection of Internet Connection Method**
In most situations, the ADE-3400 can detect your ADSL and Internet connection to determine the connection method used by your ISP.
- **Fixed or Dynamic IP Address**
On the Internet (WAN port) connection, the ADE-3400 supports both Dynamic IP Address (IP Address is allocated on connection) and Fixed IP Address.

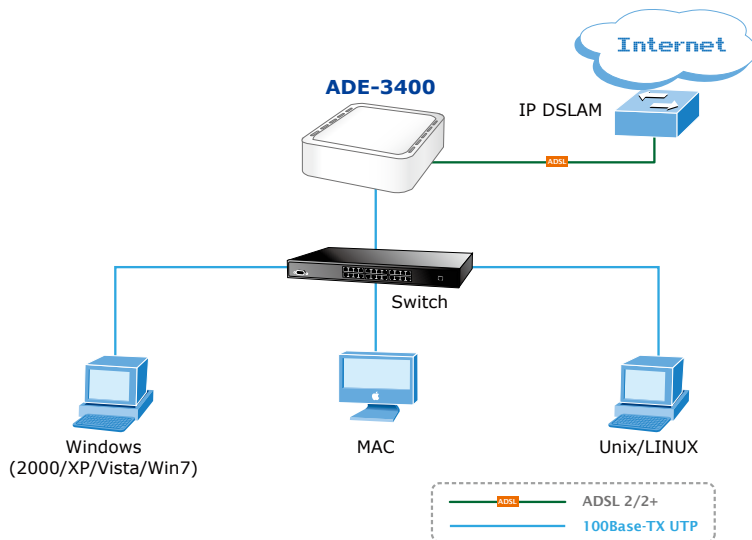
Advanced Internet Functions

- **QoS**
Quality of Service divides this capacity between the different applications and provides underplayed, continuous data transfer where data packets with higher priority are given preference.
- **Virtual Servers**
This feature allows Internet users to access Internet servers on your LAN. The required setup is quick and easy.
- **DMZ Support**
The ADE-3400 can translate public IP addresses into private IP address to allow unrestricted 2-way communication with servers or individual users on the Internet. This provides the most flexibility to run programs, which could be incompatible in NAT environment.
- **Firewall**
Supports simple firewall with NAT technology and provides option for blocking the access from Internet, like Web, FTP, Telnet, SNMP, and ICMP.
- **Universal Plug and Play (UPnP)**
UPnP allows automatic discovery and configuration of the Broadband Routers. UPnP is supported by Windows ME, XP, Vista/ Win 7, Mac or later.
- **VPN Passthrough Support**
PCs with VPN (Virtual Private Networking) software are transparently supported and no configuration is required.

Applications

Internet Connection with Firewall

The ADE-3400 is the perfect solution to connecting a small group of PCs to a very high-speed broadband Internet connection. Compliant with ADSL 2/2+ standards, it supports downstream rates up to 24Mbps and upstream rates up to 3.5Mbps. The built-in firewall can protect your LAN and prevent the attacks from the internet.



Internet Access Features

- RIP1/2 Routing
It supports RIPv1/2 routing protocol for routing capability.
- Simple Network Management Protocol (SNMP)
It is an easy way to remotely manage routers via SNMP.

LAN Features

- Ethernet Port
The ADE-3400 provides one Ethernet port, made to easily create or extend your LAN.
- DHCP Server Support
Dynamic Host Configuration Protocol provides a dynamic IP address to PCs and other devices upon request. The ADE-3400 can act as a DHCP Server for devices on your local LAN and WLAN.
- IPv6 Support
The ADE-3400 implements the new IP version for further compatibility of network environment.

Specifications

Model		ADE-3400
Hardware Specification		
Standard		<p>Compliant with ADSL Standard</p> <ul style="list-style-type: none"> - Full-rate ANSI T1.413 Issue 2 - G.dmt (ITU G.992.1) - G.lite (ITU G.992.2) - G.hs (ITU G.994.1) <p>Capable of ADSL2 Standard</p> <ul style="list-style-type: none"> - G.dmt.bis (ITU G.992.3) Annex A, L and M - G.lite.bis (ITU G.992.4) <p>Capable of ADSL2+ Standard</p> <ul style="list-style-type: none"> - G.dmt.bisplus (ITU G.992.5)
Protocol		<p>RFC 1483 Bridge</p> <p>RFC 1483 Router</p> <p>IEEE 802.1D transparent bridging</p> <p>Bridge Filtering</p> <p>Bridged or routed Ethernet encapsulation</p> <p>VC and LLC based multiplexing</p> <p>PPP over Ethernet (PPPoE)</p> <p>PPP over ATM (RFC 2364)</p>
AAL and ATM Support		<p>Supports up to 8PVCs</p> <p>VC and LLC Multiplexing</p> <p>ATM Adaptation Layer Type 5 (AAL5)</p> <p>Integrated ATM AAL5 support (UBR,CBR,VBR,VBR-rt, and VBR-nrt)</p> <p>OAM F4/F5</p>
Ports	LAN	1 x 10Base-T/100Base-TX, Auto-Negotiation, Auto MDI/MDI-X
	WAN	1 x RJ-11, Auto-Negotiation
LED Indicators		PWR, Link, Data, LAN
Max. Concurrent Sessions		4096
Software		
Protocol / Feature		<p>NAT supports PAT/NAPT and multimedia applications</p> <p>Static routing and RIPv1/2</p> <p>Transparent Bridging</p> <p>SNTIP</p> <p>DNS relay</p> <p>IGMP Proxy</p> <p>IGMP Multicast</p> <p>DMZ and Virtual Server</p>
Security		<p>Built-in NAT Firewall</p> <p>IP Port Filter, MAC Filter, URL Blocking, DoS Setting</p> <p>PPP over PAP (Password Authentication Protocol; RFC1334)</p> <p>PPP over CHAP (Challenge Authentication Protocol; RFC1994)</p> <p>Access Control List (ACL)</p> <p>Denial of Service (DoS)</p> <p>IP-based Packet filtering</p> <p>MAC filtering</p> <p>URL filtering</p> <p>Password protection for system management</p>
VPN		VPN Passthrough
Management		<p>Web-based configuration</p> <p>Embedded Telnet server for remote and local management</p> <p>Configuration data upload and download via WEB</p> <p>Firmware upgraded via WEB and TFTP</p> <p>QoS</p> <p>SNMP v2 MIB supported</p> <p>Supports DHCP server/relay</p> <p>Built-in diagnostic tool and IP Ping</p> <p>TR-069</p>
Storage Humidity		5 ~ 95%, Relative Humidity, non-condensing
Environment Specifications		
Dimensions (W x D x H)		78 x 74 x 26 mm
Power		5V DC, 1A (Consumption 2.1W)
Temperature:		Operating temperature: 0 ~ 50 degrees C
Humidity		Storage temperature: -40 ~ 70 degrees C
		Humidity: 5 ~ 95% non-condensing
Emission		FCC, CE

Ordering Information

ADE-3400A	ADSL 2/2+ Router
-----------	------------------

Related Product

ADE-3400A	ADSL 2/2+ Router
ADE-4400	ADSL 2/2+ 4-Port Router
ADN-4100	300Mbps 802.11n Wireless ADSL 2/2+ 4-Port Router
ADN-4101	150Mbps 802.11n Wireless ADSL 2/2+ 4-Port Router
IDL-2402	24-Port IP DSLAM
IDL-4802	48-Port ADSL 2/2+ IP DSLAM (2 x GbE Combo, 100~240 VAC)
IDL-4802-48	48-Port ADSL 2/2+ IP DSLAM (2 x GbE Combo, -48 VDC)

PLANET Technology Corporation

11F., No.96, Minquan Rd., Xindian Dist., New Taipei City
231, Taiwan (R.O.C.)

Tel: 886-2-2219-9518

Email: sales@planet.com.tw

Fax: 886-2-2219-9528

www.planet.com.tw



PLANET reserves the right to change specifications without prior notice. All brand names and trademarks are property of their respective owners. Copyright © 2013 PLANET Technology Corp. All rights reserved.

ADE-3400